

Installation accessories Specification

AS-NNR13P-15

AS-NNR13P-1000

AS-NNR13DCX-XX

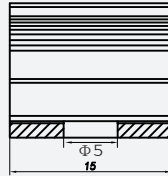
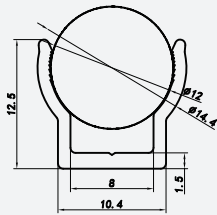


【Features】

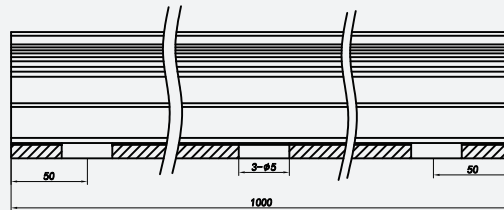
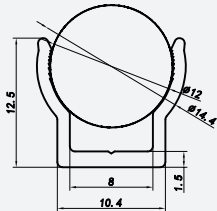
- Material: PC;
- Operating environment: indoor;
- Installation: screw flat mounting;
- Warranty: 3 years.

【Mechanical Parameter】

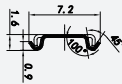
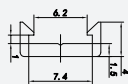
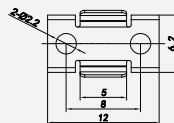
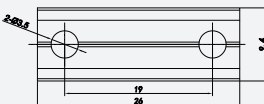
AS-NNR13P-15



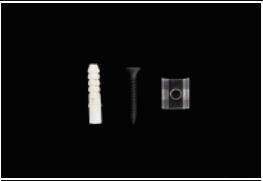
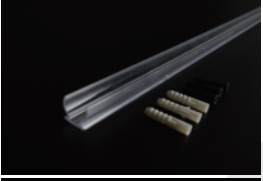

AS-NNR13P-1000



AS-NNR13DCX-XX



【Specification information】

Describe	Accessories Picture	Order model	Quantity/ case (PCS)	Net weight (kg)	Per box net weight (kg)	Gross weight (kg)	Packages (mm)	Range of applications
Flat mounting PC groove		AS-NNR13P-15	500	0.003	1.5	1.7	250*250*150	Size: L15*W10.4*H12.5mm with screws Recommended dosage: 1PCS/0.5M
Flat mounting PC groove		AS-NNR13P-1000	80	0.058	4.64	5.8	1180*125*115	Size: L15*W10.4*H12.5mm with screws
Stealth accessories		AS-NNR13DCX-XX	500	0.0003	0.15	0.8	250*250*150	Size: L26*W9.4*H4mm with screws Recommended dosage: 1PCS/0.5M

【Precautions】

- Do not use any acid or alkaline adhesive to fix products(including not limited to glass cement,etc).
- After the installation of the lamps and lanterns is completed, do not pull violently, to avoid damage to the lamp.